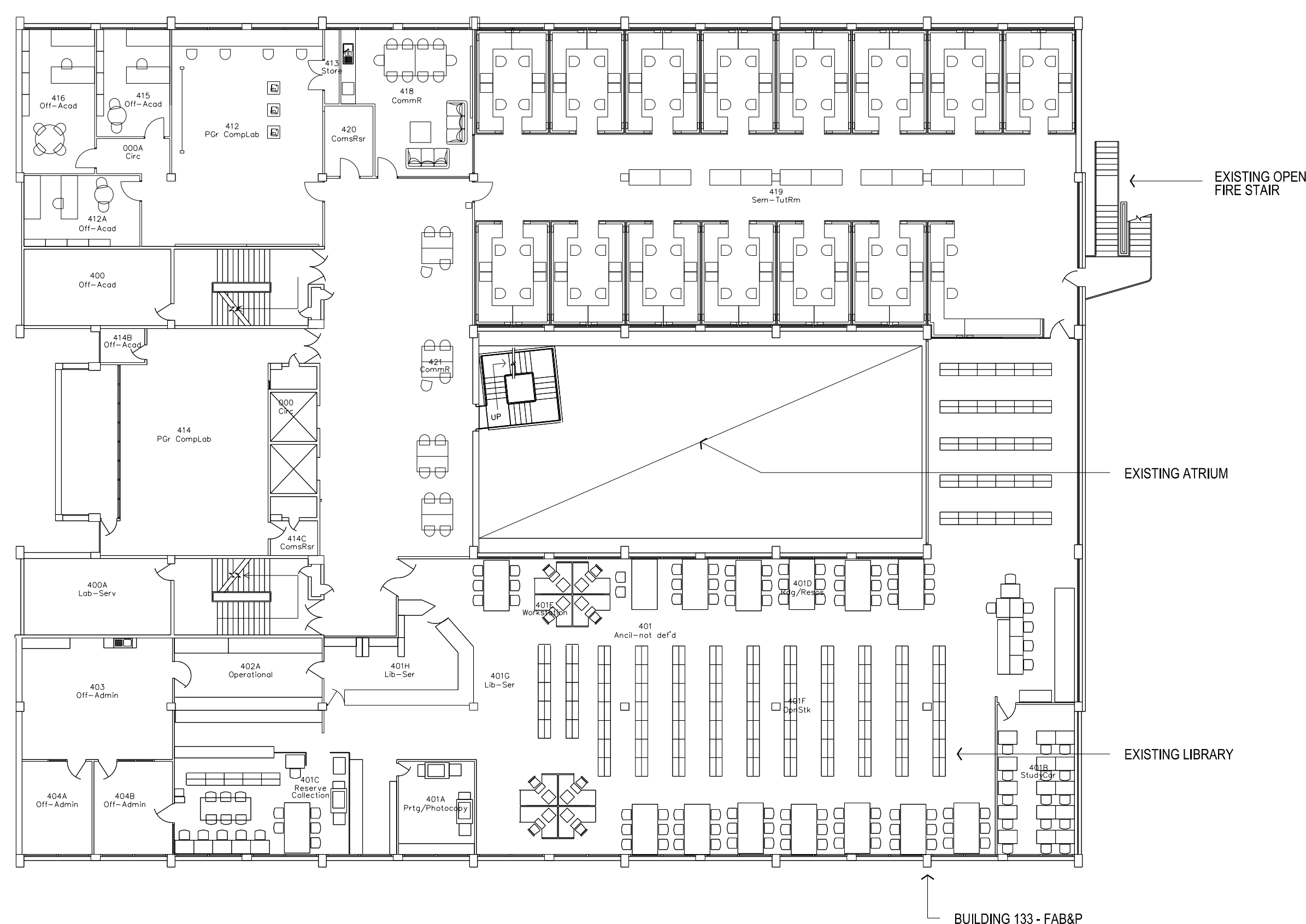
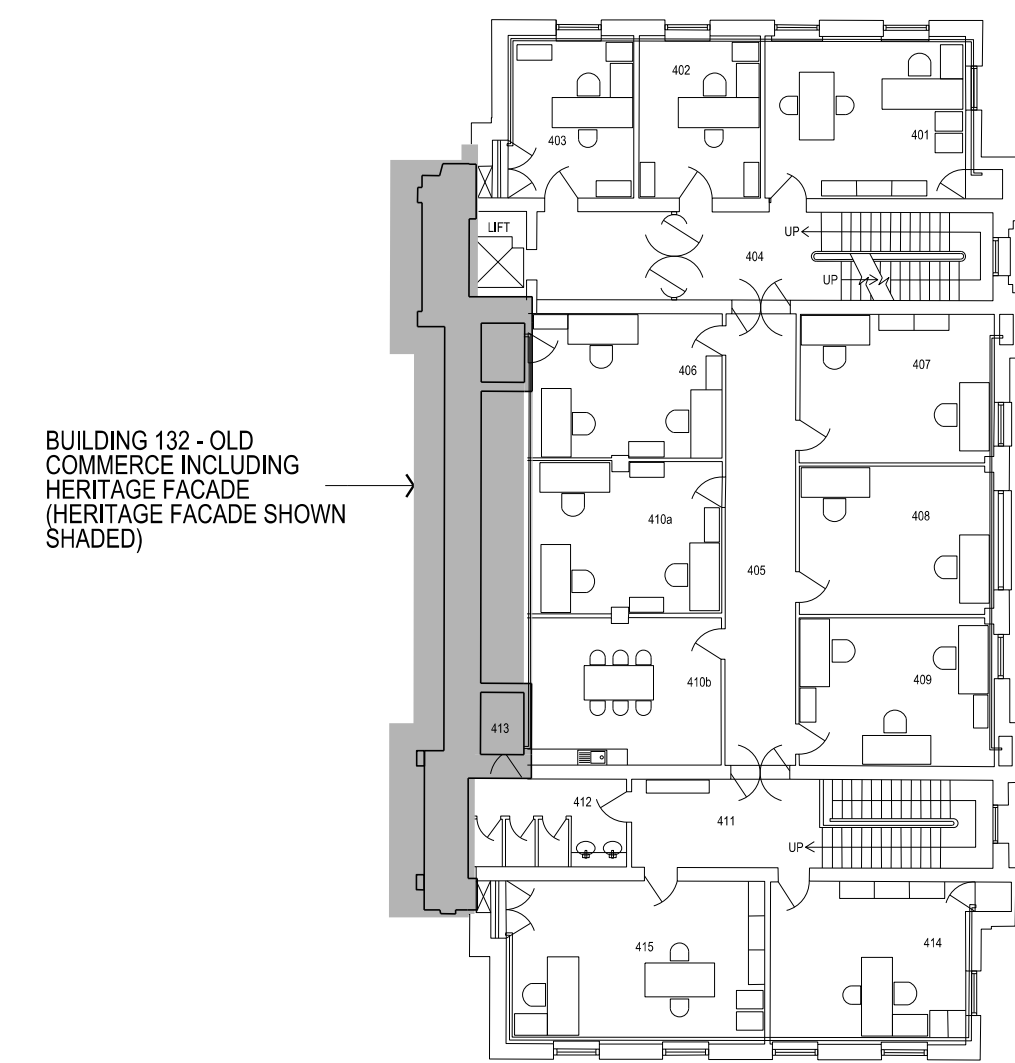


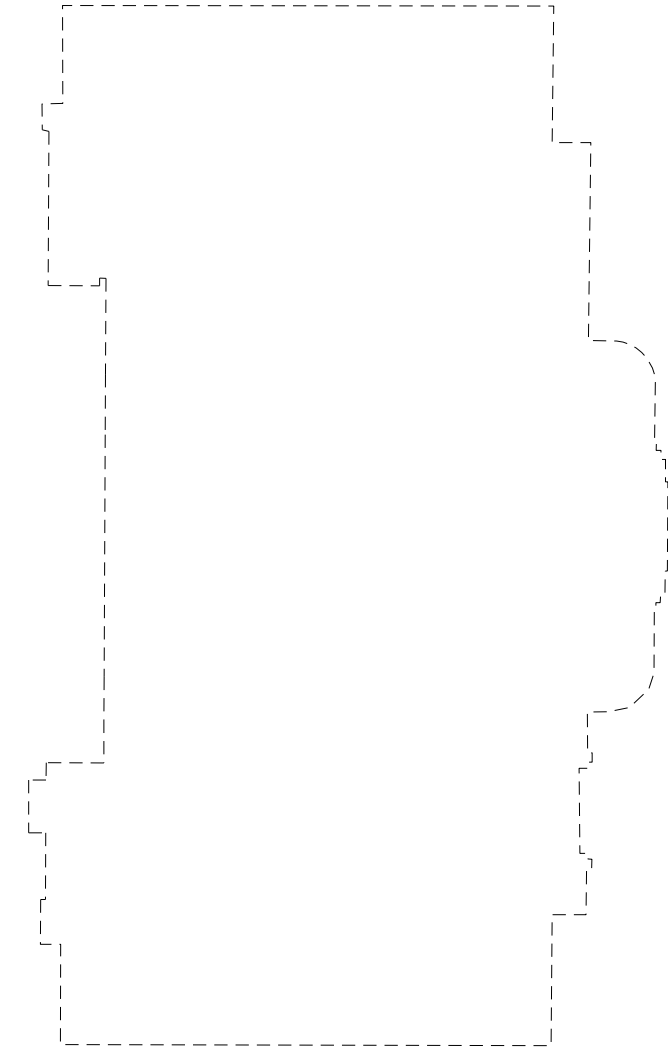
CONTRACTORS SHALL VERIFY JOB DIMENSIONS BEFORE ANY JOB COMMENCES. ALL SHOP DRAWINGS SHALL BE SUBMITTED TO THE SUPERINTENDENT AND MANUFACTURERS SHALL NOT COMMENCE PRIOR TO THE RETURN OF AWARDED SHOP DRAWINGS SIGNED BY THE CONSULTANT. FIGURED DIMENSIONS SHALL TAKE PRECEDENCE OVER SCALES. THIS DRAWING SHALL BE READ IN CONJUNCTION WITH ALL RELEVANT CONTRACT SPECIFICATIONS AND DRAWINGS COPYRIGHT OF THIS DRAWING IS VESTED IN WARDLE.

General Notes

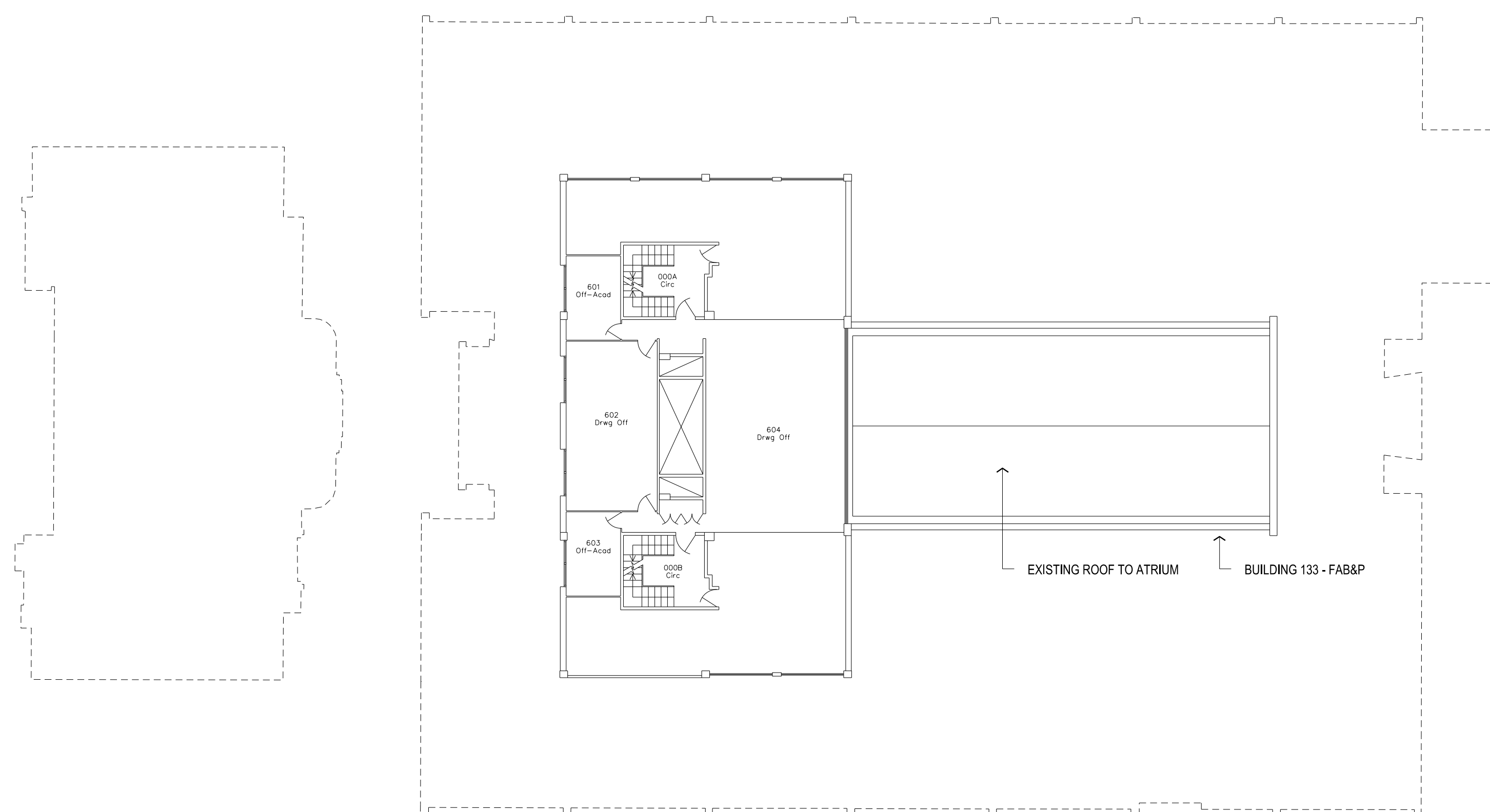
- NOTES:
- REFER STRUCTURAL DRAWINGS FOR EXTENT OF TEMPORARY STEEL PROPPING TO EXISTING OLD COMMERCE FACADE. WHERE TEMPORARY STEEL PENETRATIONS REQUIRED, EXISTING DOORS AND WINDOWS TO BE REMOVED AND RETAINED FOR FUTURE REFURBISHMENT.
 - REFER TO STONE MASON'S REPORT FOR EXISTING CONDITION OF OLD COMMERCE HERITAGE FACADE.



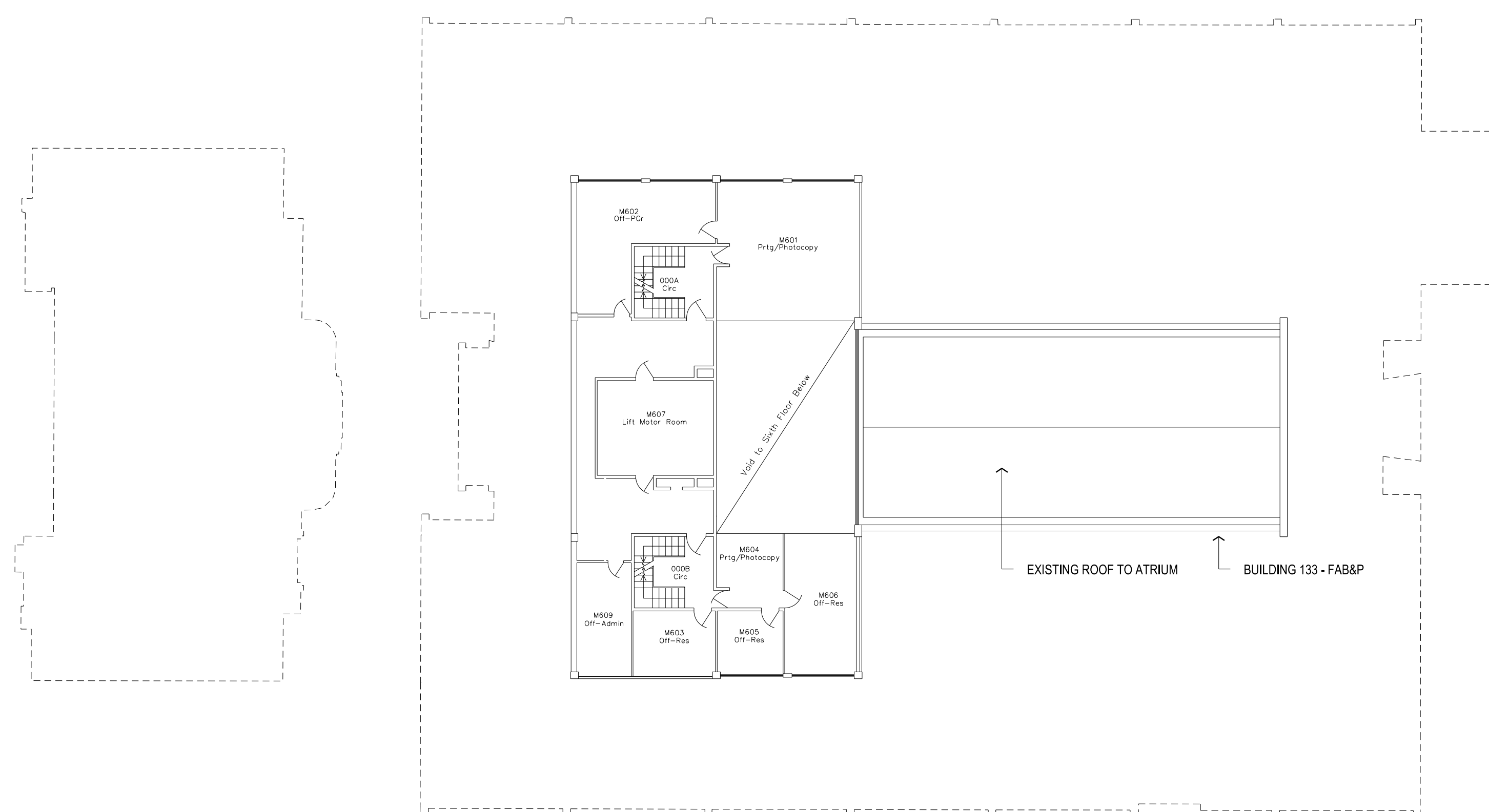
01 EXISTING PLAN LEVEL 4 FLOOR PLAN SCALE 1:200



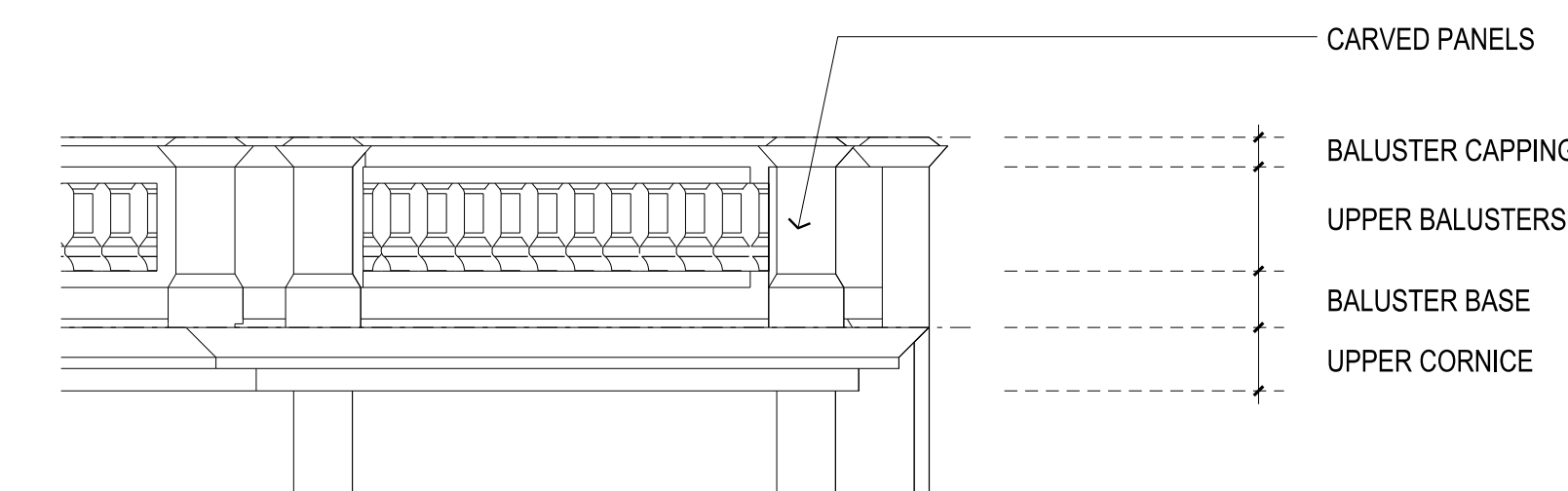
02 EXISTING PLAN LEVEL 5 FLOOR PLAN SCALE 1:200



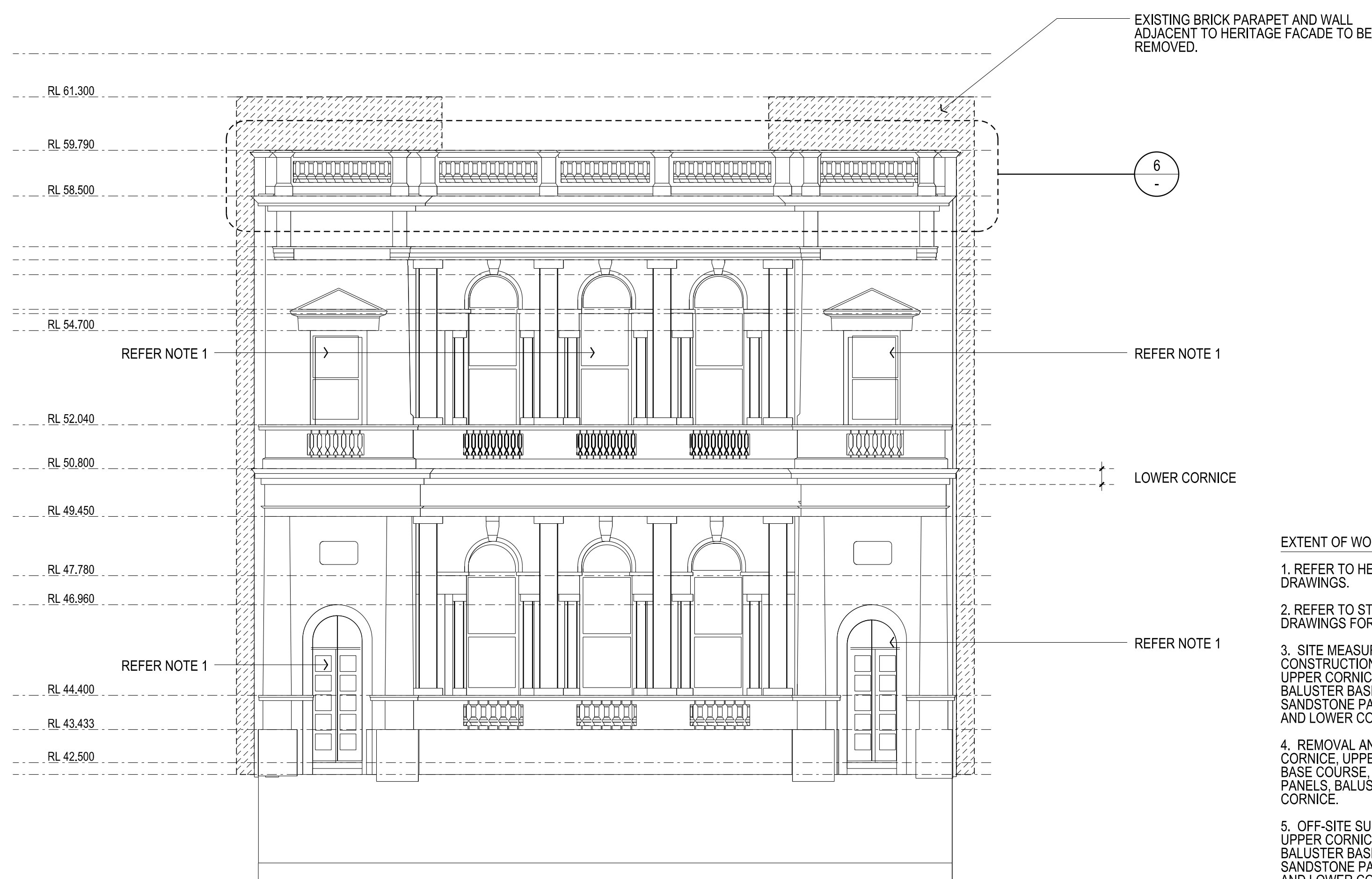
03 EXISTING PLAN LEVEL 6 MEZZANINE FLOOR PLAN SCALE 1:200



04 EXISTING PLAN LEVEL 6 FLOOR PLAN SCALE 1:200



05 DETAIL OF UPPER FACADE SCALE 1:50



06 EXISTING ELEVATION OLD COMMERCE FACADE SCALE 1:100

- EXTENT OF WORK TO HERITAGE FACADE:
- REFER TO HERITAGE ARCHITECTS DRAWINGS.
 - REFER TO STRUCTURAL ENGINEERS DRAWINGS FOR FACADE PROPPING.
 - SITE MEASURE AND PRODUCTION OF CONSTRUCTION SHOP DRAWINGS OF UPPER CORNICE, UPPER BALUSTER, BALUSTER BASE COURSE, UPPER CARVED SANDSTONE PANELS, BALUSTER CAPPING AND LOWER CORNICE.
 - REMOVAL AND DEMOLITION OF UPPER CORNICE, UPPER BALUSTER, BALUSTER BASE COURSE, UPPER CARVED SANDSTONE PANELS, BALUSTER CAPPING AND LOWER CORNICE.
 - OFF-SITE SUPPLY AND FABRICATION OF UPPER CORNICE, UPPER BALUSTER, BALUSTER BASE COURSE, UPPER CARVED SANDSTONE PANELS, BALUSTER CAPPING AND LOWER CORNICE AS PER APPROVED SHOP DRAWINGS.
 - FULL WASH DOWN AND REPOINTING OF ENTIRE SANDSTONE FACADE.
 - WINDOW FRAMES TO REMAIN IN SITU.
 - CAREFUL REMOVAL & STORAGE OF GLASS TO WINDOWS. GLASS TO BE REINSTATED.
 - DOOR FRAMES TO REMAIN IN SITU.
 - CAREFUL REMOVAL, STORAGE & RESTORATION OF DOORS. DOORS TO BE REINSTATED.

Rev	Issue	Revision Description	And	Date
A	SG	ISSUED FOR CONSTRUCTION	-	10.01.14
10	SG	100% CD - TENDER ISSUE	-	07.08.12
09	SG	FOR TENDER - ADDITIONAL NOTES ADDED TO EXTENT OF WORK TO HERITAGE FACADE	-	07.08.12
08	SG	FOR TENDER	-	07.08.12
07	SG	100% ENABLING WORKS - DRAWING ISSUE	-	29.06.12
06	SG	50% CD ISSUE	-	01.06.12
05	SG	50% ENABLING WORKS - DRAWING ISSUE	-	18.05.12
04	SG	25% CD ISSUE	-	20.04.12
03	SG	FINAL DD ISSUE	-	24.02.12
02	SG	DD UPDATE	-	20.01.12
01	SG	DESIGN DEVELOPMENT ISSUE	-	22.12.11



NADAAA
 NADAAA
 1520 Washington Street No.2 Boston Massachusetts 02115 USA
 Telephone +1 817 442 8232 Facsimile +1 888 442 1417 Email nadaa@nadaaa.com

John Wardle Architects
 25 Rokeby Street, Collingwood, Victoria 3066 Australia
 Tel: +61 3 8662 0400 www.johnwardlearchitects.com
 © 2012 John Wardle Architects ABN 83 006 814 268

Client **University of Melbourne Parkville Campus**
 Project **Faculty of Architecture Building and Planning**
 Title **Existing Conditions Level 4, Level 5, Level 6M, Level 6**

Project No.	0913	Scale	1:200 @ A0 1:400 @ A2
Drawing No.	AR0202	Revision	A

Date: Dec - 2011 Drawn: Co-Ord: Check:

FILENAME - \$FILES

FOR CONSTRUCTION